

## Start

The queen mates with a drone and lays an egg in each cell of the honeycomb.

## Finish



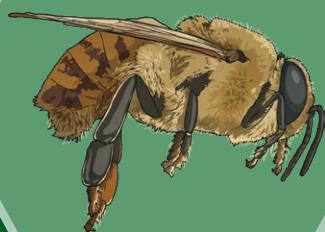
After three days, the egg hatches into a white, legless larva.



# Question Cards



When the pupae are fully developed, they chew their way out of their cells.



After around nine days, the larva spins a cocoon around itself and becomes a pupa, similar to a caterpillar. The worker bees seal the pupae into their cells.

## Instructions

Place the **Question Cards** face down in the centre of the game board.

Each person should take a coloured counter.

Take turns to roll a 1-6 dice.

On their roll, each player should move their counter according to the number shown on the dice.

If a player lands on a 'bee' tile, the person to their right should take a **Question Card** and ask the player the question. If the player answers the question correctly, they can move one space ahead. If they answer incorrectly, they should go back to the start.

The first player to complete the life cycle is the winner!