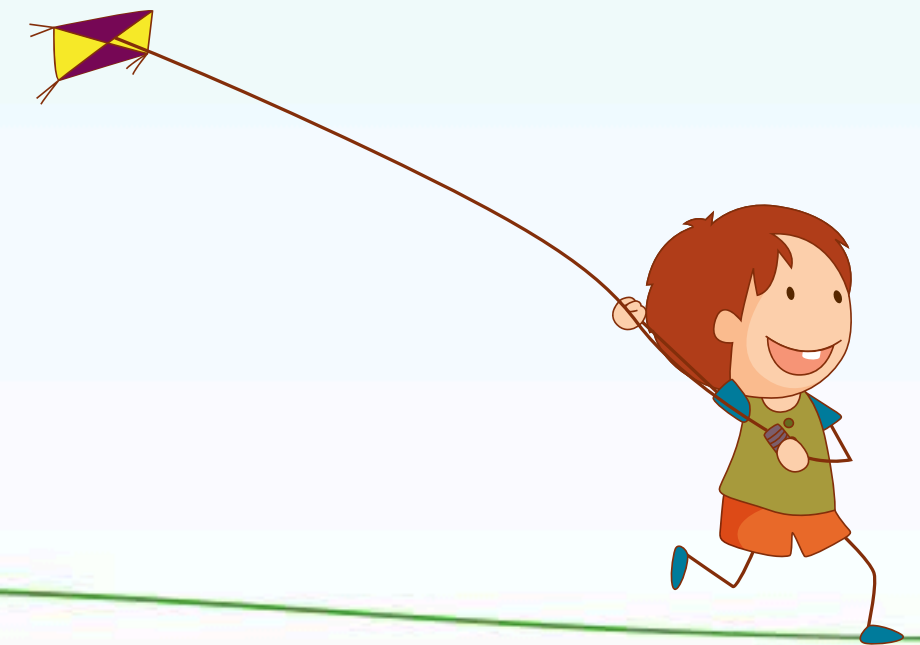
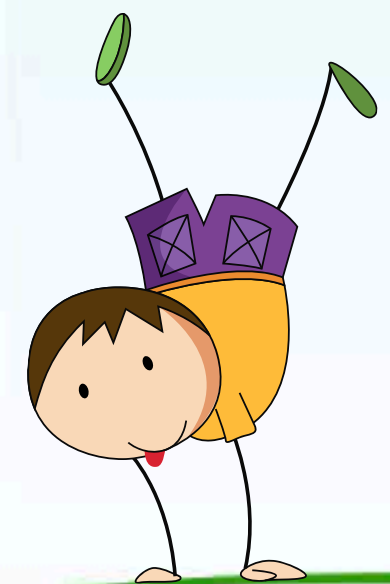


# Identity and Belonging

## Learning Objective:

To explore ways in which a sense of belonging is shaped by our relationships and environment.



# Where do I belong?

Is 'belonging' simply  
calling somewhere  
home or is there  
more to it?



BACK

NEXT

Do you agree with these children's ideas?

## Belonging is...

- ...being somewhere you feel safe.
- ...being with your family.
- ...taking part in community life.
- ...being cared for.
- ...being in an area you know.
- ...having somewhere to relax.
- ...being in the place where you grew up.



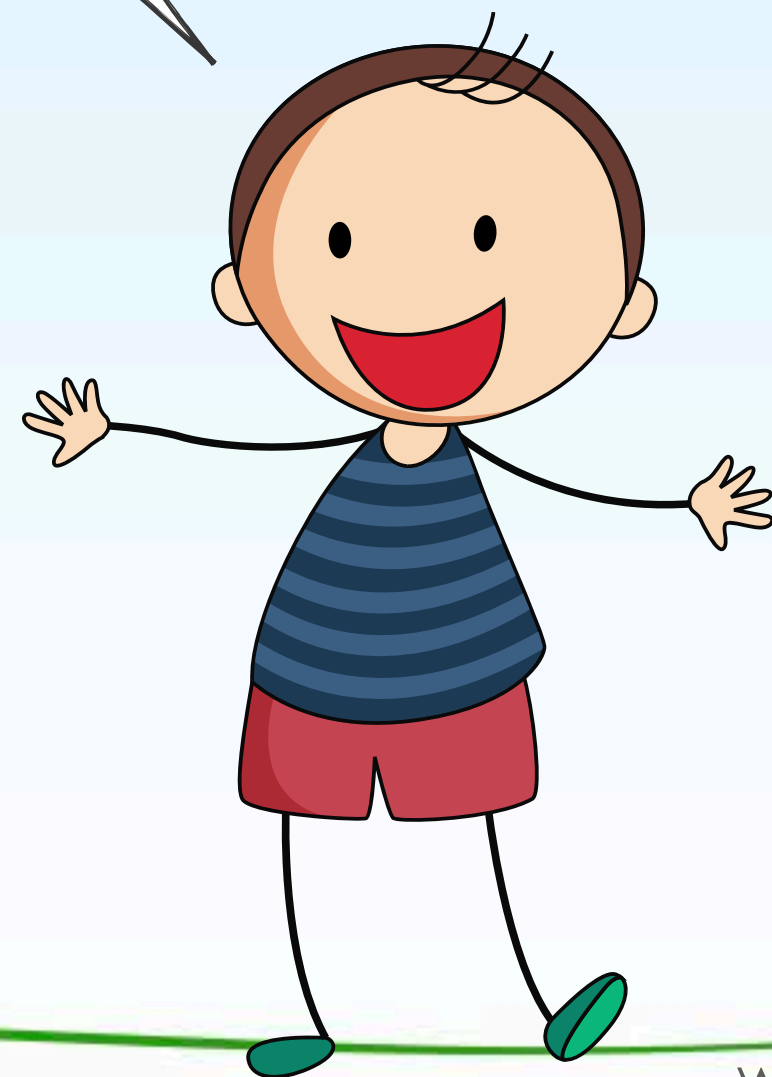
BACK

NEXT

# Where do I belong?

Having a place where you belong is really important--

--being with people you care about, taking part in community life and living in a familiar environment make people feel safe, content and included.



BACK

NEXT

Where do you live? In  
the country? A village?  
A town? A city?  
Somewhere cold? Hot?



The environment where  
you live is important  
for your sense of  
belonging, too.



Imagine what it might be  
like if you suddenly had  
to move somewhere  
completely different...

Sadly, lots of people have to leave their home because of war or poverty.

When somebody leaves their home to escape danger, they are called refugees. Leaving your home to seek refuge in a safer place can be very difficult and dangerous.



Let's take a closer look at what refugees experience when they leave the place where they belong...



Most refugees have to leave their home in a hurry. They may only be able to take the things that they can carry.

Can you imagine what it would be like to leave your home, your possessions, your friends and even some members of your family?

They may have to leave without saying goodbye to friends or family. They may not know when they will see them again.

Refugees may have to go to refugee camps where they are safer. Refugee camps are crowded. There may be very little food and water. Diseases may spread easily because of the poor living conditions.



These refugees have fled their homes in Syria because of war. They are queueing for water.

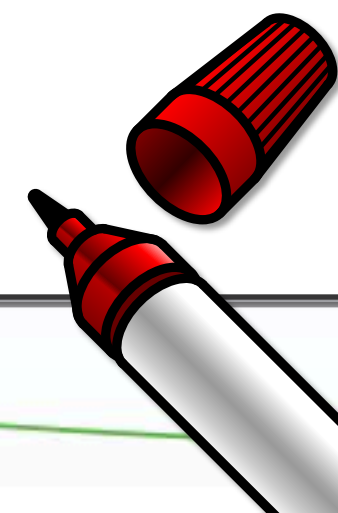


Refugees may take dangerous journeys to escape to safety. Lots of refugees die making journeys like these.

They may have to sleep on the streets on their journey to safety. It is cold and dangerous.



What do you think it is like for refugees from other countries when they arrive in the United Kingdom? How might they feel? What difficulties might they experience?



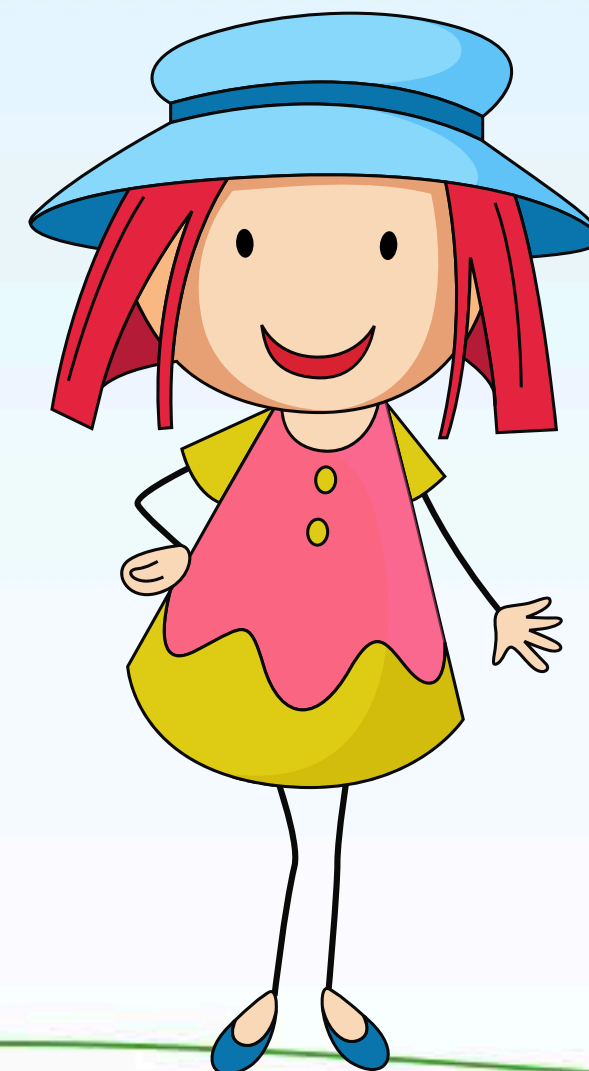
BACK

NEXT

When refugees or other newcomers arrive in a new community it is important for them that they can develop a sense of belonging.



Today we will be thinking about how people can help newcomers and make them feel welcome in a community.

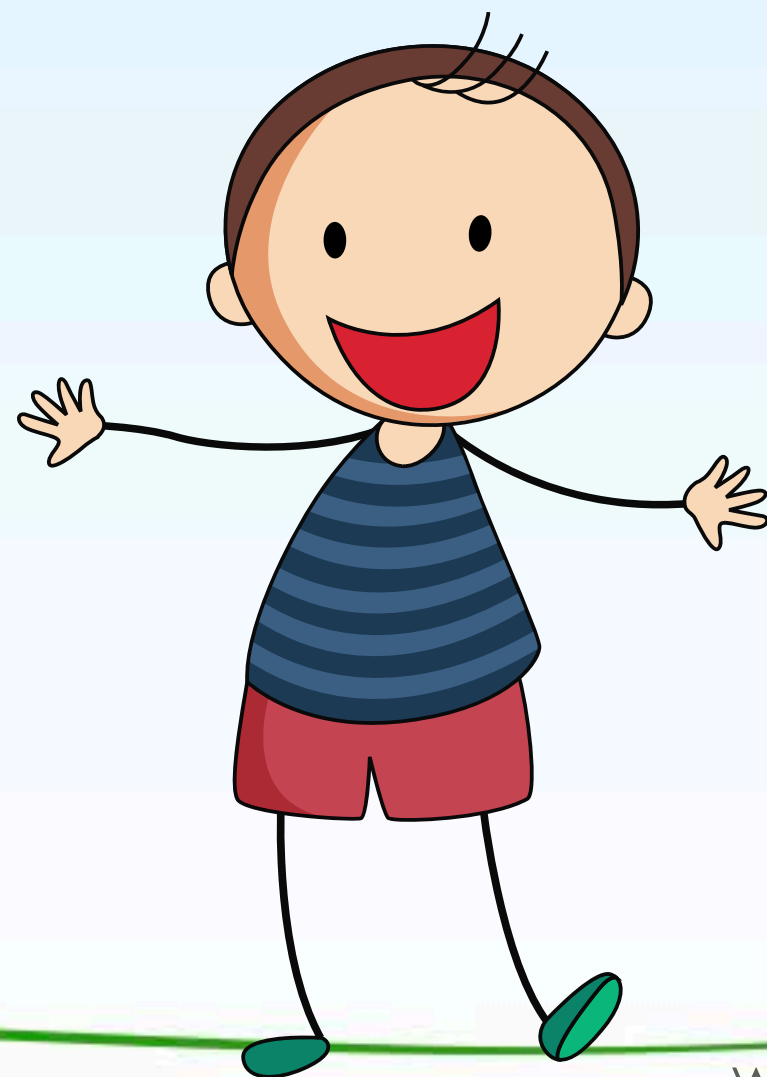


BACK

NEXT

# PLENARY

Does school  
contribute to your  
own sense of  
belonging?



What are the  
good things about  
being part of a  
school community?



BACK