



End of Topic Quiz: The Circle of Life

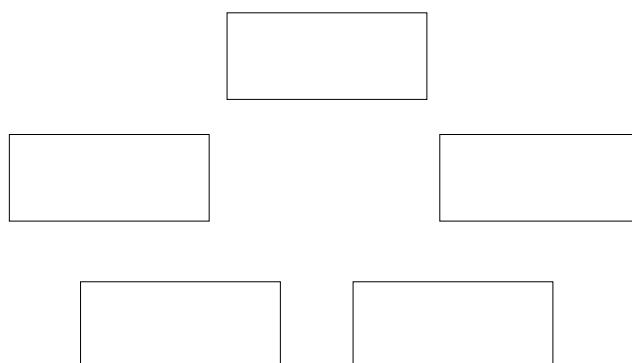
Q1. Circle the odd one out of each group of living things.

- A) frog, lizard, gold fish, snake
- B) lion, giraffe, vulture, hamster
- C) seagull, black bird, salmon, chicken

Q2. Find the name the animal groups in the jumbled words below.

- | | |
|--------------|----------|
| 1. hisf | 1. _____ |
| 2. ibanaphim | 2. _____ |
| 3. lamma | 3. _____ |
| 4. petiler | 4. _____ |
| 5. dirb | _____ |

Q3. Complete the life cycle of a frog. Use the words to help you.



Adult frog
Fish
Tadpole
Egg mass
Tadpole with legs
Eggs
Reproduction
Pupa

Q4. Describe how the life cycle of a bird is different to the life cycle of a mammal.



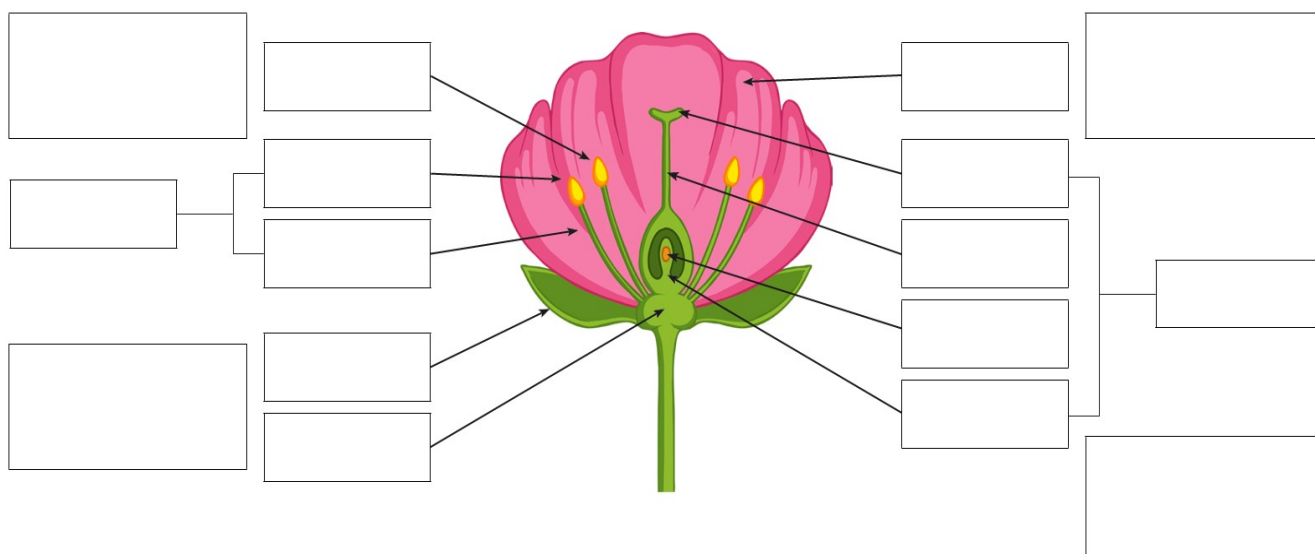
Q5. Describe and compare the gestation periods of different mammals.

Gestation Periods	
Species	Days
Asian Elephant	645
Cow	284
Human	266
Chimpanzee	227
Black Bear	210
Lion	108
Dog	63
Rabbit	33



End of Topic Quiz: The Circle of Life

Q6. Label the reproductive parts of the plant using the words below.



pollen	carpel	petal	stigma	style	filament
stamen	receptacle	sepal	anther	ovary	ovule

Q7. Fill in the gaps.

The flower's bright colours and fragrant scents attract an insect. The insect arrives on the flower to collect _____. This is a sweet liquid which makes perfect insect food. As the insect is gathering the nectar it rubs against the _____ which rub _____ on the insect. When the insect gets hungry again, it gets attracted to another flower's bright colours and fragrant scent. As the insect feeds on the nectar in this new flower, the _____ stuck to the insect from the first flower rubs off onto the female parts of the second flower (the _____). Part of this pollen travels down the style and then into the _____. The tiny piece of pollen joins onto an _____ in the ovary. The plant has now been fertilised. The ovary of the flower turns into _____ which will then be _____ so that new plants will be able to grow somewhere else.

Word Bank				
petal	nectar	anthers	ovule	seeds
stigma	pollen	fertilised	ovary	dispersed