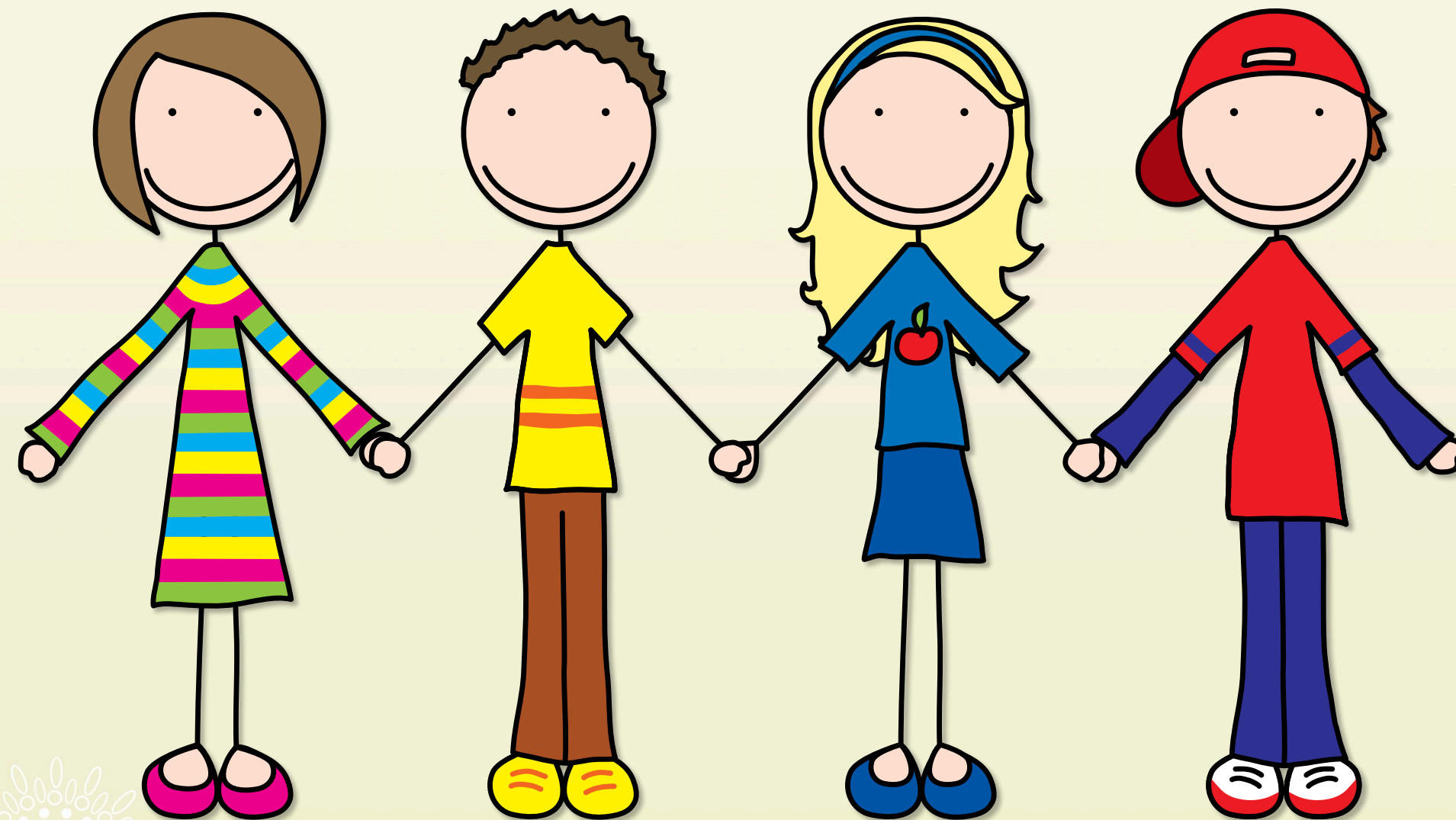


Belief In Our Community

Learning Objective:

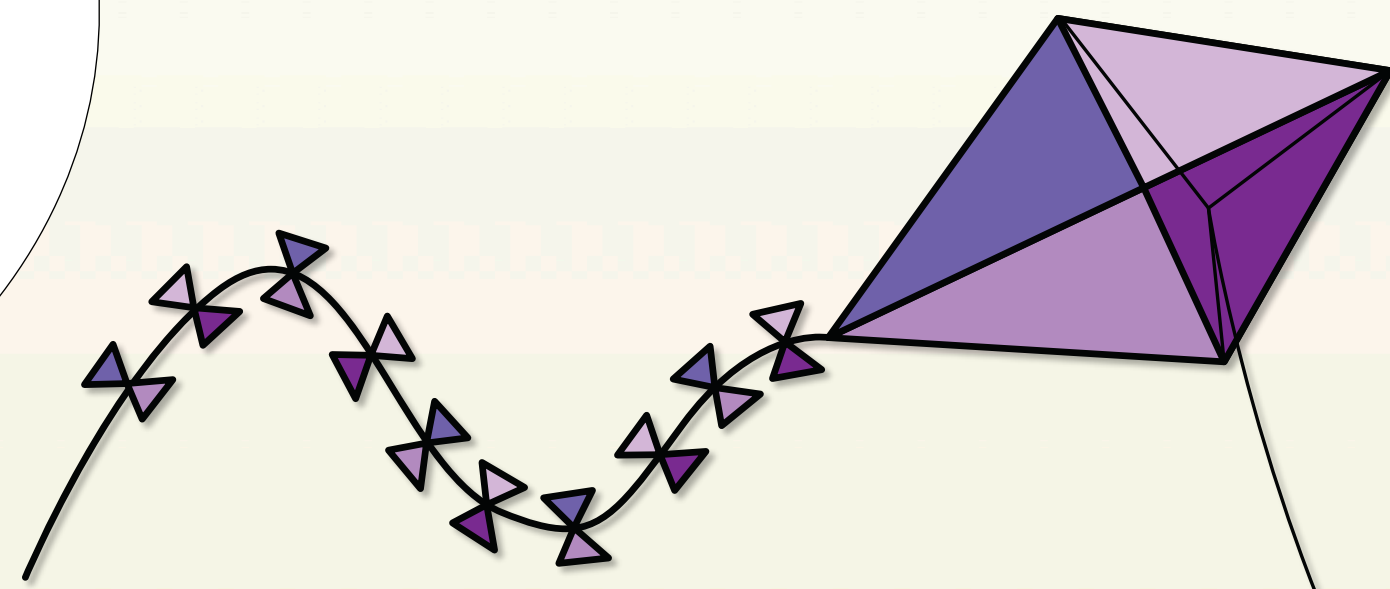
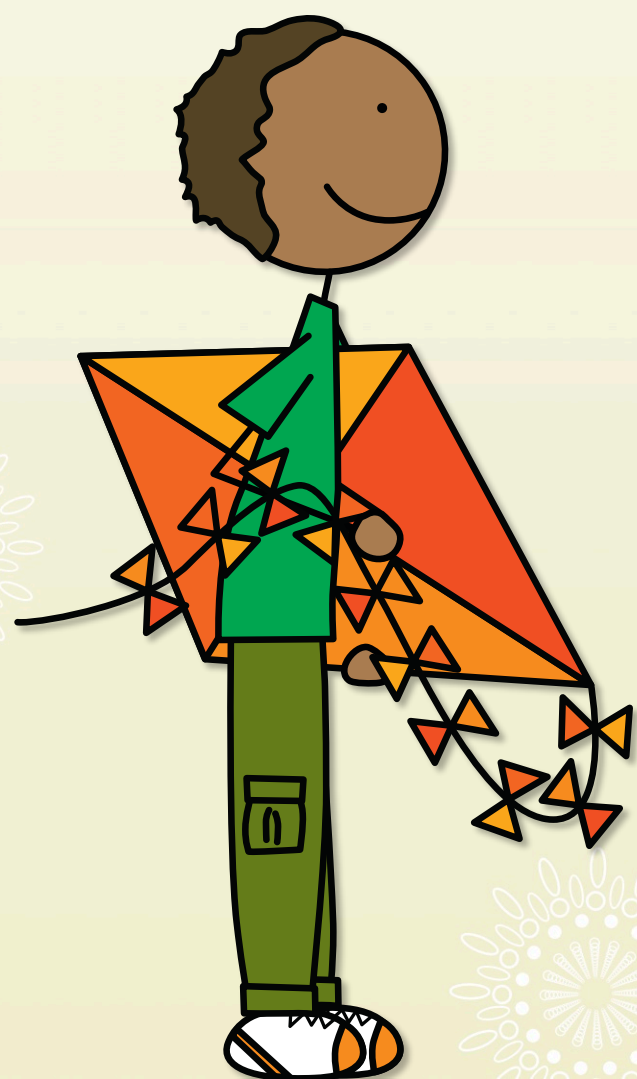
To find out about the different beliefs of religious and non-religious groups in our local area.



What are
beliefs?

What
beliefs do you
think we all
share?

Discuss your ideas.



BACK

NEXT

What shared beliefs do we have in school?



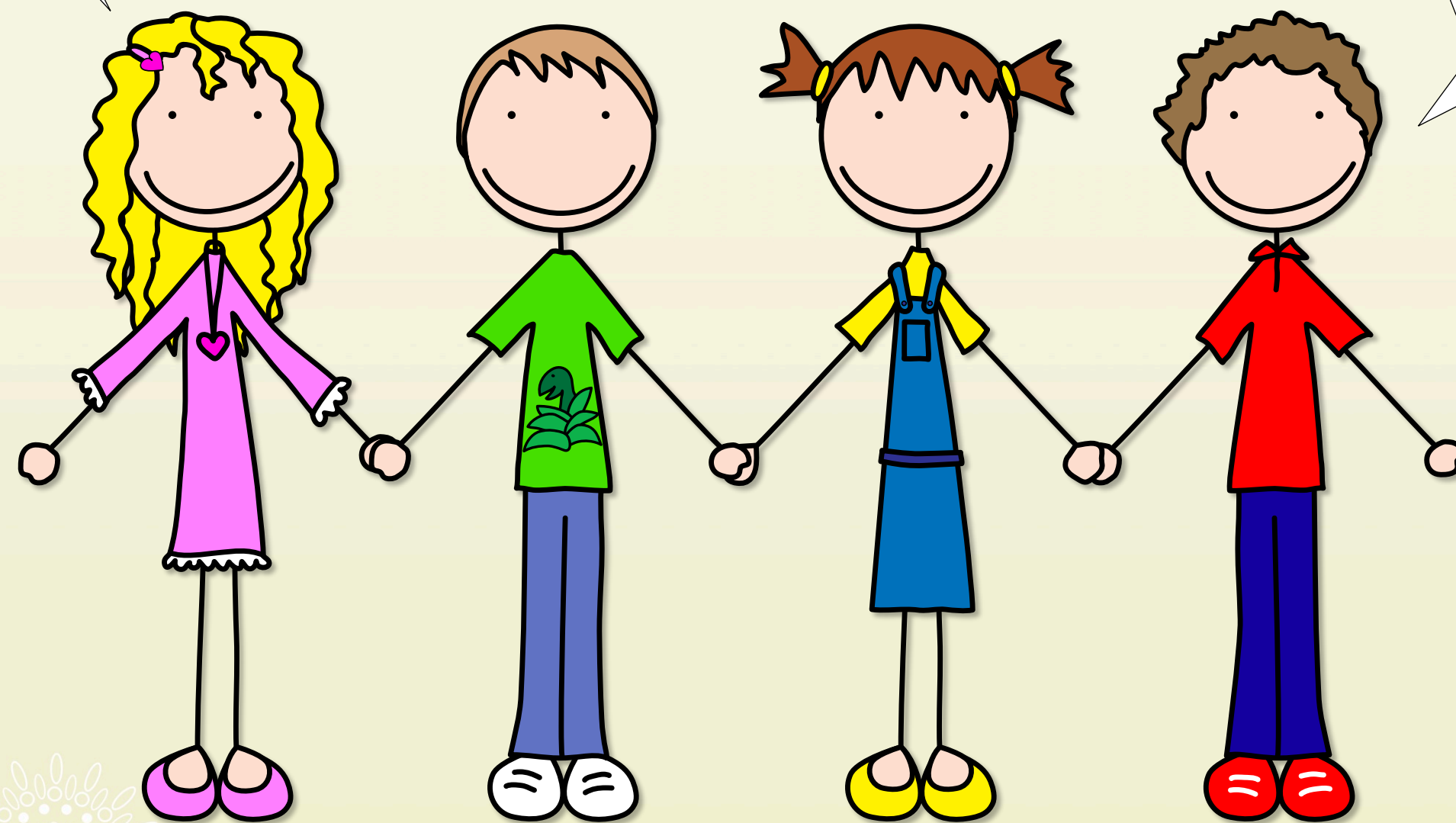
BACK

NEXT

When talking
about their religion,
many people say
that they have
'faith'.

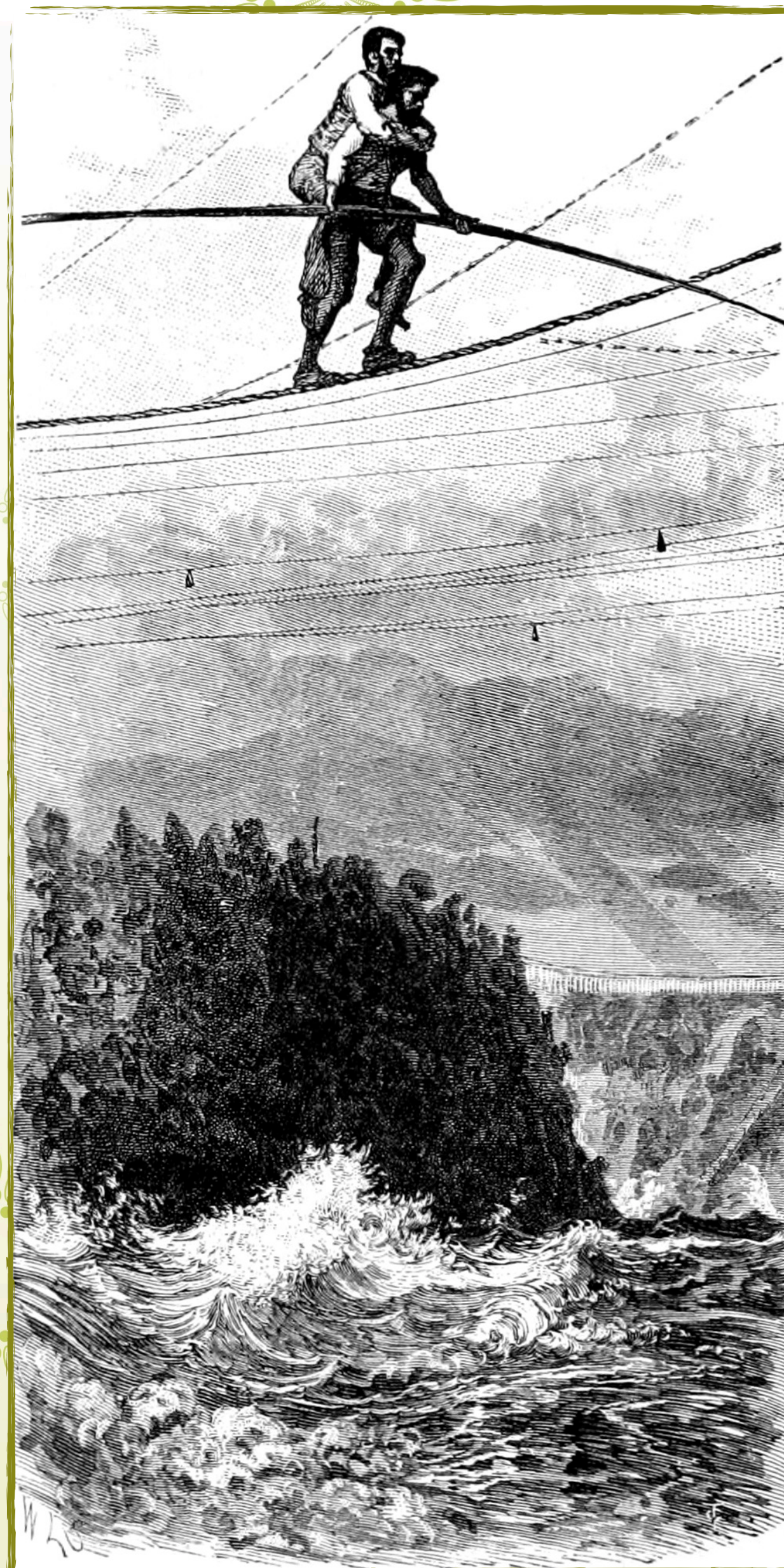
What do
you think this
means?

Do you think
having 'faith' is
different to
having 'beliefs'?



BACK

NEXT



The story of Charles Blondin is often used to describe the difference between belief and faith.

Charles Blondin was a famous French tightrope walker. In 1859, he began preparing to become the first person to tightrope walk across the Niagara Falls.

He surprised the crowd watching at the riverbank. Not only did he cross the river - he did it blindfolded, pushing a wheelbarrow!

Once across, he asked the crowd, "Do you believe that I can carry a person across in this wheelbarrow?"

"Yes! Yes!" the crowd cried.

"Very good!" replied Blondin. "Now who will get in my wheelbarrow?"

The crowd were silent.

Charles was astonished. "You all said you believed in me! Do you not have faith in my ability to carry you across safely?"



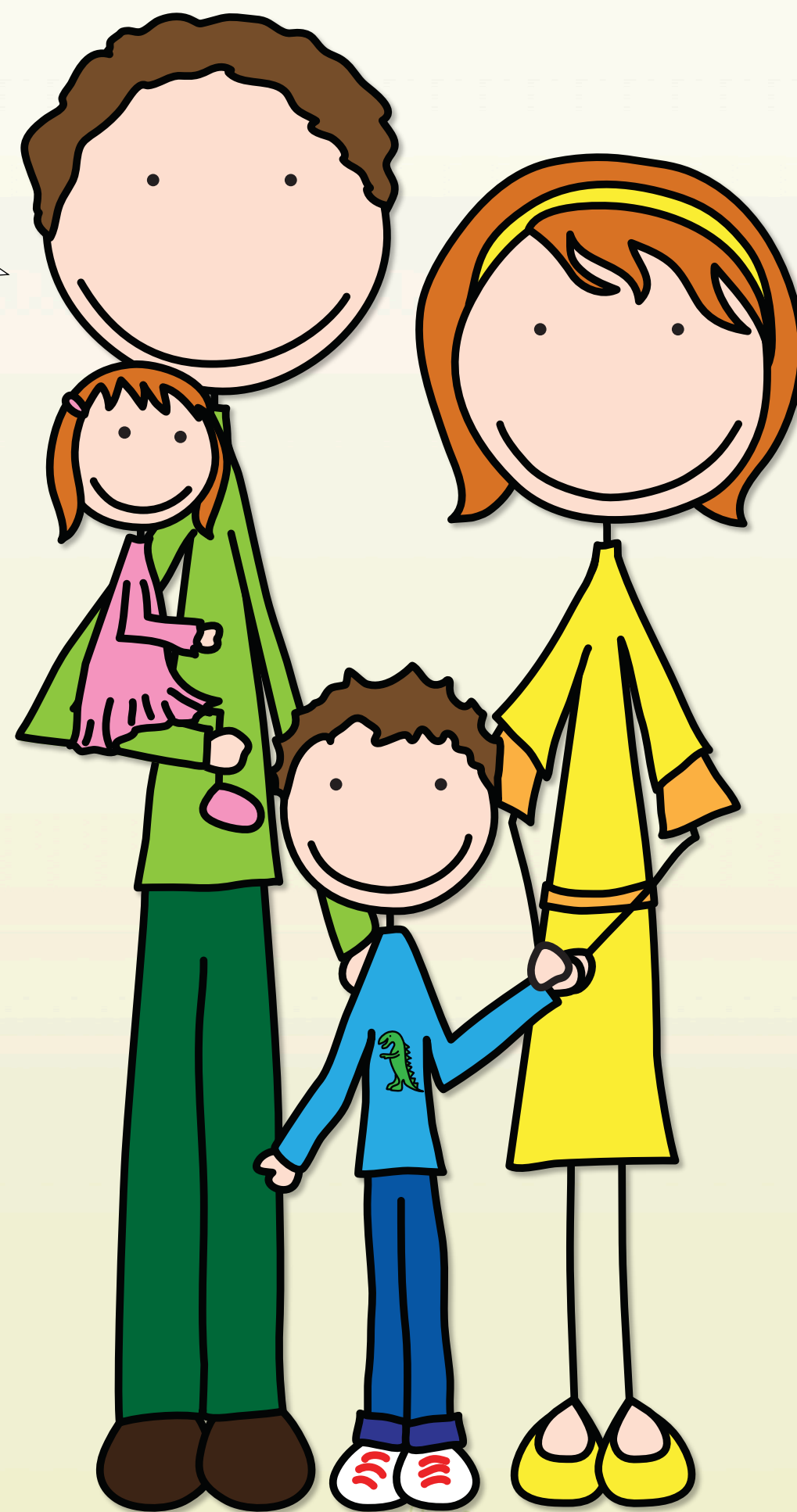
What do you think this story says about the difference between belief and faith?



BACK

NEXT

People who are not religious may have a different explanation of belief and faith.

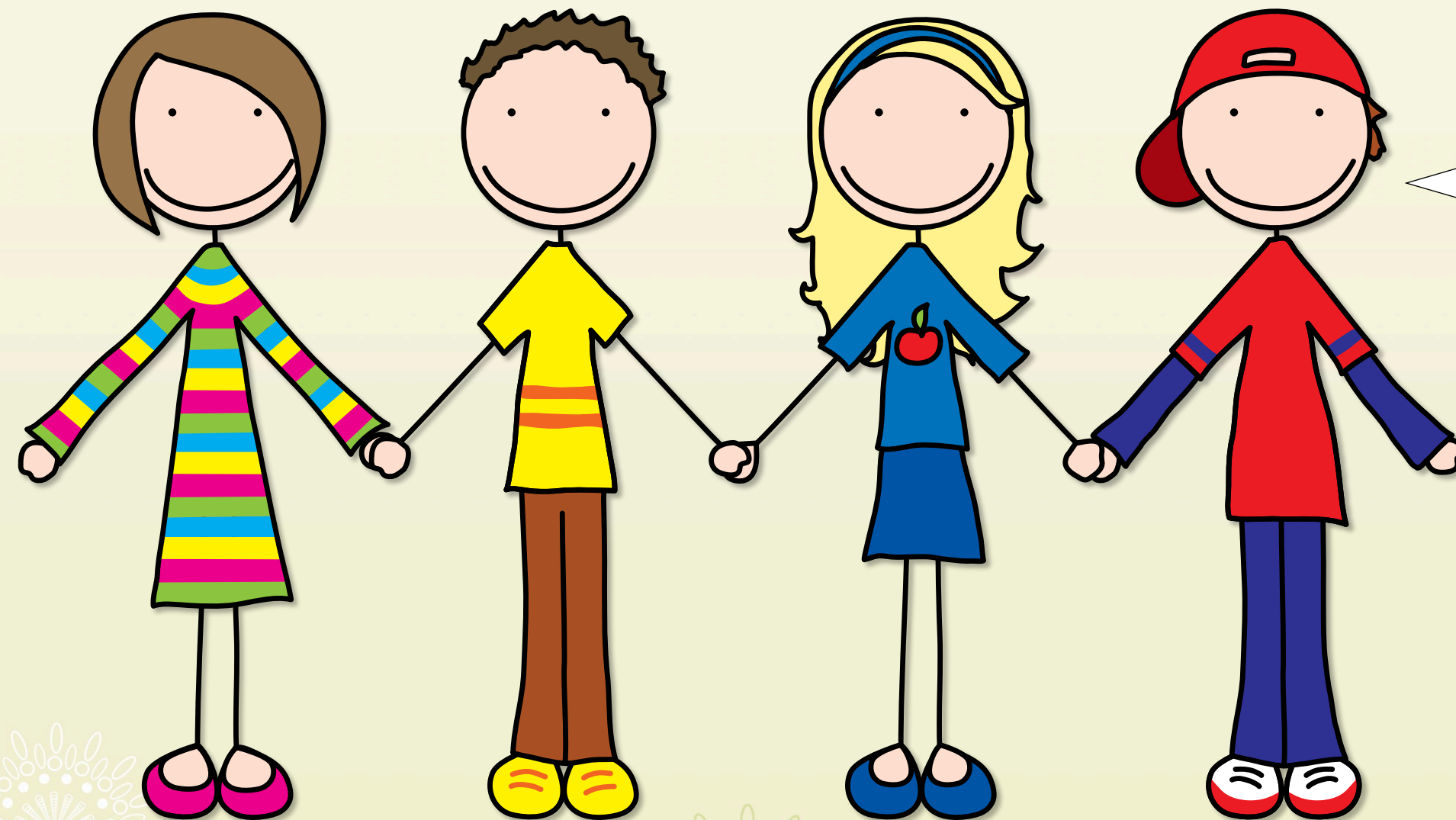


I believe things when I have seen lots of evidence. I have faith that it is important to be kind, even though I am not religious.

Members of religious communities say that having faith helps them make sense of life's 'big' questions.

What might those 'big' questions be?

How does it feel to be a part of a religious community with other people who share the same faith?



BACK

www.planbee.com

NEXT

This is one way of thinking about the way our communities are structured:

Our local area

Rotary Club

school

Methodist
church

scouts

my family

guides

The people in your local area form a large community.

There are lots of other communities within the local area.

Some communities are linked; some are not.

BACK

NEXT

Another way of thinking about communities is from your own point of view:

Our local area

My school

My neighbourhood

My family

Me

You are a member of a small, but very important community: your family!

Your family is part of your neighbourhood community and so on.

Each community is bigger than the last!

BACK

NEXT

Can you think of some different communities in your local area? Write them below, then carry out a quick survey to see who in your class is a member of each community:

Community Name	Tally



Today we will be finding out more about the beliefs of different communities in our local area.



BACK